

## S-28E/S-18E Three Knife Trimmer



\*S-28E



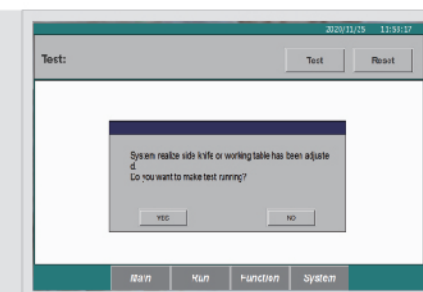
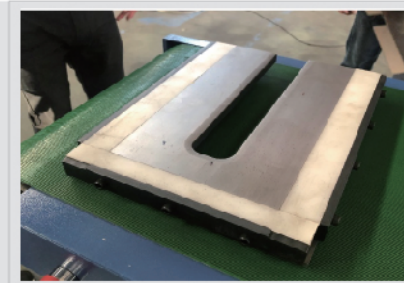
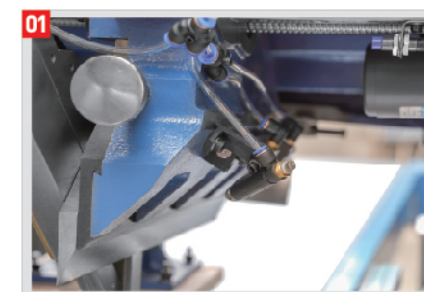
\*S-18E

S-28E/S-18E three knife trimmer is the latest design machine for book cut. It adopts the latest optimum design including programable side knife, servo control gripper and quick-change working table to match the request regarding short run and quick set-up of both digital printing house and conventional printing factory. It can rise efficiency of short-run job highly.

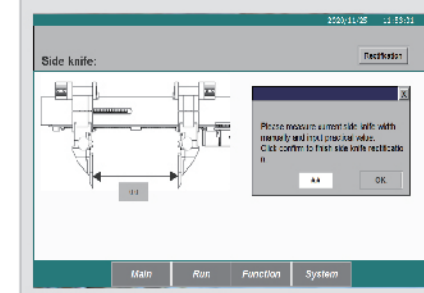
## »»» Specification

Model	S-28E	S-18E
Max. Trim Size(mm)	420x300	340*300
Min. Trim Size(mm)	80x80	90x80
Max. Trim Height(mm)	100	60
Min. Stock Height(mm)	5	5
Max. cutting speed (times/min)	28	18
Main Power(kW)	6.2	4
Overall Dimension (L×W×H)(mm)	2800x2350x1700	1520x1820x1680

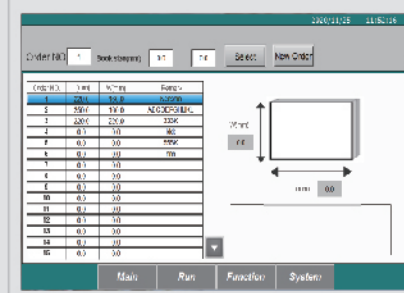
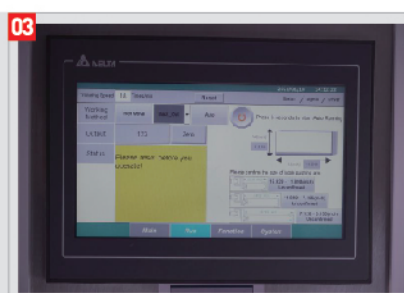
## »»» Characteristics



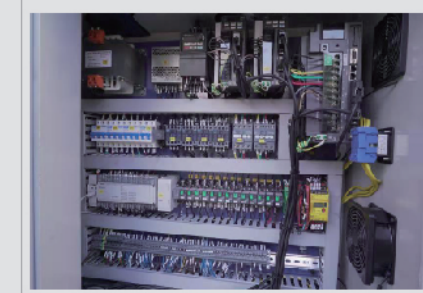
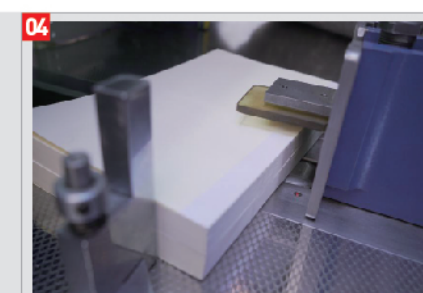
5 pcs of working table can cover full range of cutting size and quick-change design to fulfil rapid set up each new order in 20 secs. The wider working table allow trimming between 185-297mm without table change. Machine computer can automatically realize the size of working table to avoid accident due to wrong size reorganization.



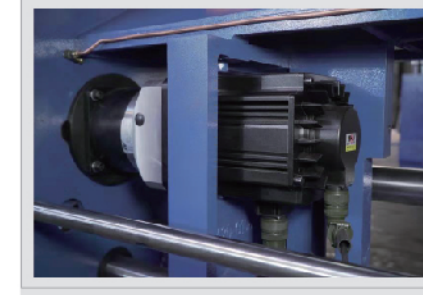
Programmable side knife and pneumatic locking



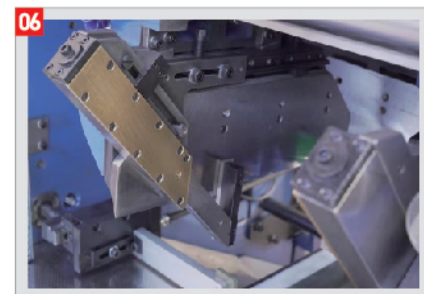
10.4 inch high resolution monitor with touch screen for machine operation, order memorization and various error diagnosis.



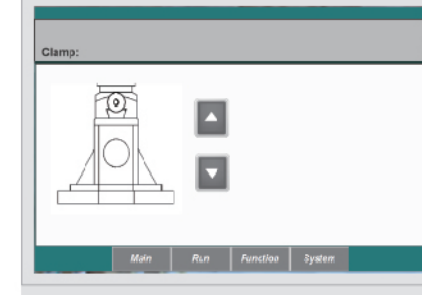
Gripper is driven by servo motor and pneumatic clamp. The book width can be set through touch screen. High precision linear guide ensure precise orientation and long working life. Photocell sensor is equipped to achieve book auto-feeding by induction.



Main motor is driven by 4.5 KW servo motor instead of conventional AC motor with elec-magnet clutch, free of maintenance, powerful trimming, long working life and ensure accurate working sequence among different machine units. All units movement of machine can be detected and set through encoder angle which facilitate trouble shooting



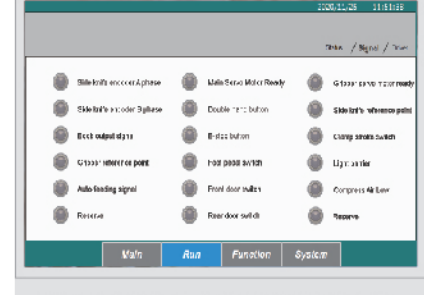
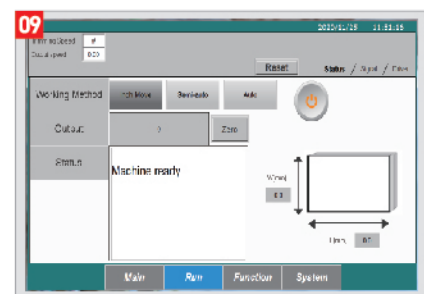
Auxiliary side knife ensure to avoid any book edge defect.



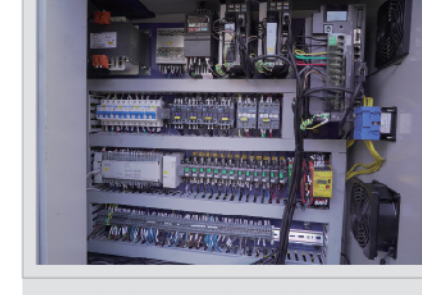
Motorized clamp height adjustment which can be operated through touch screen to match different cutting height. Clamp foot is fixed by solenoid magnet engagement which can be replaced without screw turning.



Servo driven manipulator achieve high efficiency book output even in auto continuous mode at high speed.



Combined with sensor equipped at all over the machine, all kinds of working mode, including inch-move, semi-auto mode, Auto mode, Test mode to facilitate operation and minimize operation fault possibility.

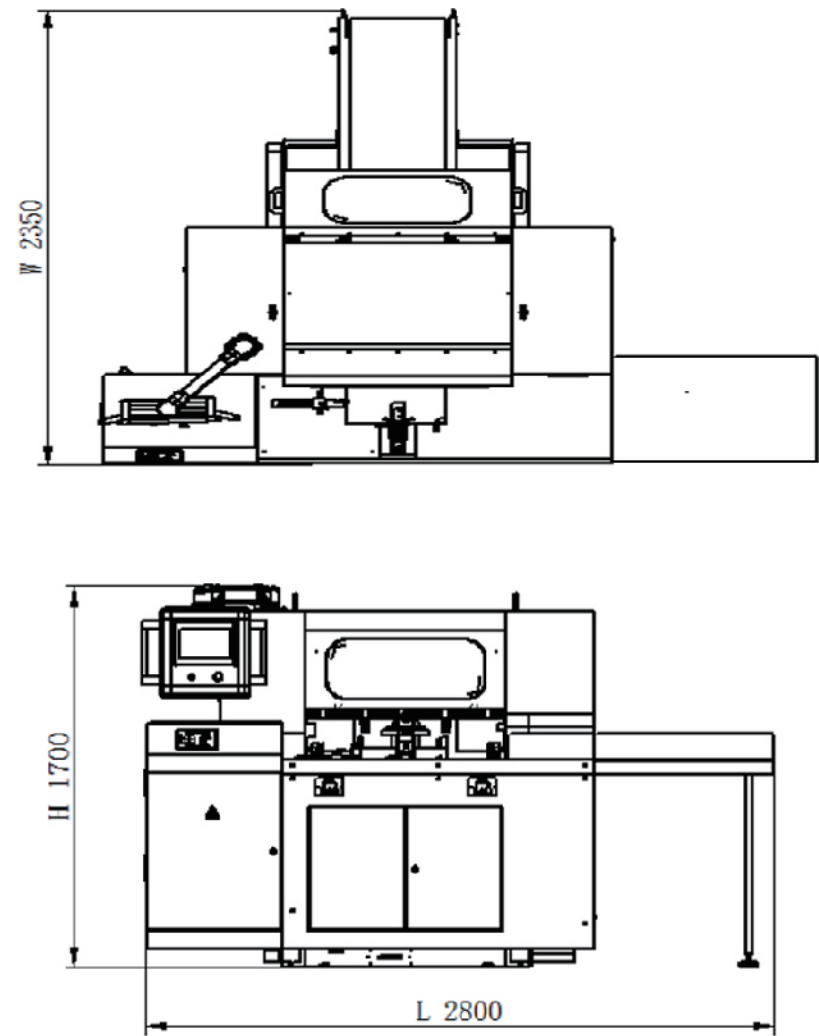


Light barrier, door switch and extra photocell combined with PILZ safety module achieve CE safety standard with redundant circuit design. (\*Option)

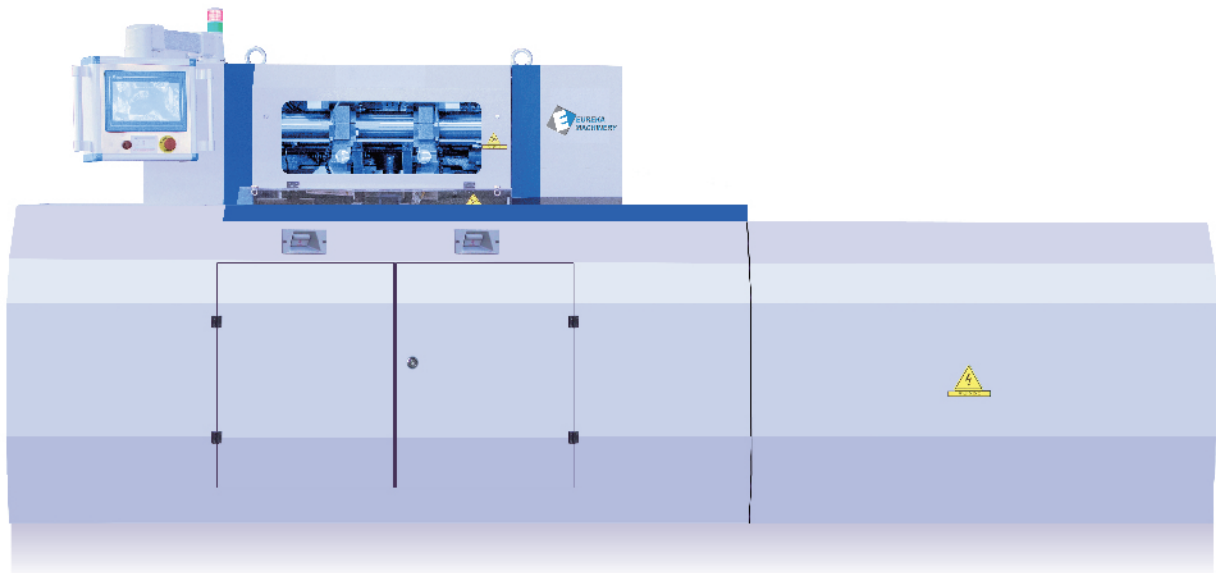




Machine Layout (S28E)



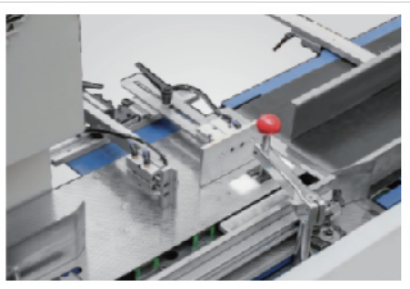
S-40E Full Automatic Three Knife Trimmer



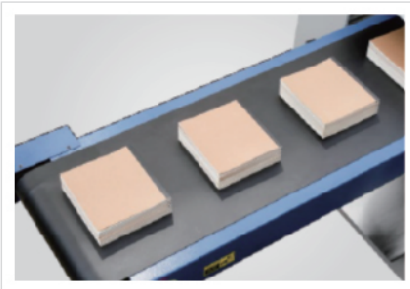
S-40E is a new generation of automatic three knife trimmer which is driven by servo system with all programmable device. S-40E has the unique features including quick set-up with changeable working table, programmable side knife, servo gripper which can combine with popular binding line in the market to achieve automatic book trimming in-line.

Specification

Model	S-40E
Max. Trim Size(mm)	380x300
Min. Trim Size(mm)	145x100
Max. Trim Height(mm)	100
Min. Stock Height(mm)	8
Max. mechanical speed (times/min)	40
Main Power(kW)	9
Overall Dimension (L×W×H)(mm)	3900x2800x1700
Machine Weight	3800kg



Equipped with horizontal book entry channelsnap device.



Servo publishing system, orderly, no paperedge to bring out

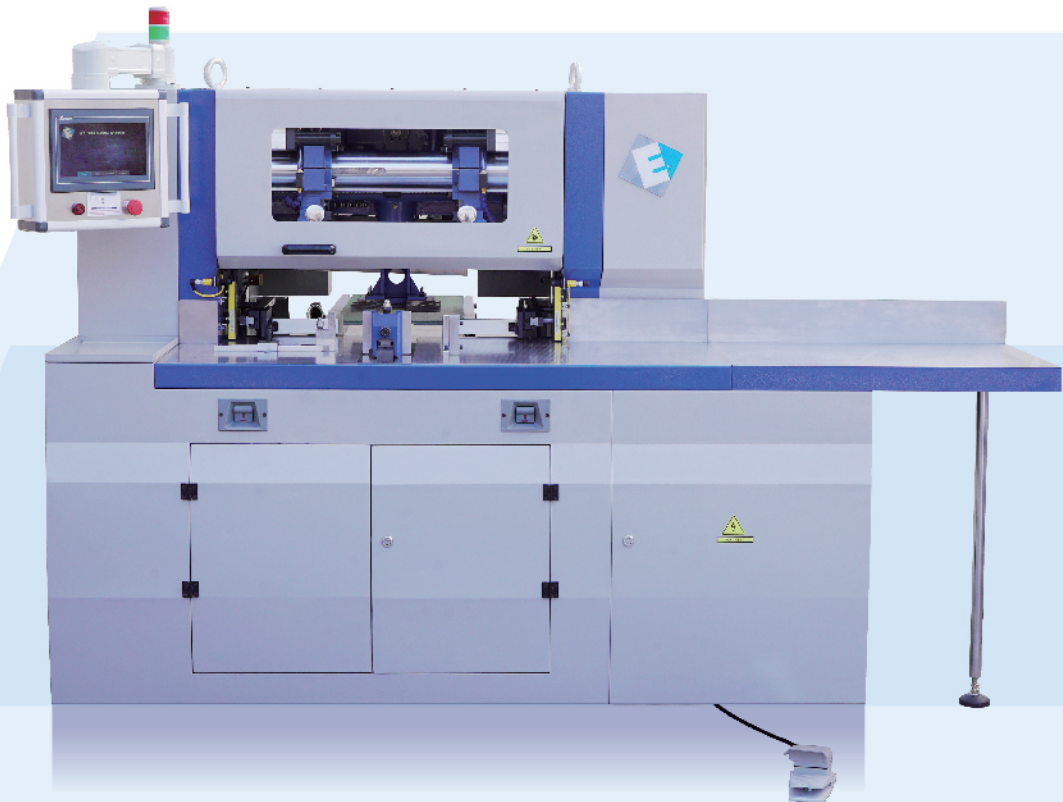
www.eureka-machinery.com



No. 188, Fuyuan Road, Fuan Town, Dongtai city, Jiangsu Province, China

Tel: +86 21 62999507 62998061 62986517  
Fax: +86 21 62985160

Web: WWW.EUREKA-MACHINERY.COM  
EMAIL: INFO@EUREKA-MACHINERY.COM



S-E Series Three Knife Trimmer

Member of GW GROUP